



Maintenance and Procurement Specialist

The most powerful
and complete maintenance
management software



COGEP

WHAT IS COGEP?

COGEP is a consulting firm specializing in the management of strategic assets for private and public organizations. For the past 30 years, COGEP has continued to develop and improve **Guide Ti**, its powerful, world-class CMMS/EAM software.

COGEP INVESTS IN R&D

COGEP spends \$1 million every year on R&D to develop and improve Guide Ti. **COGEP** incorporates the latest technologies, from tablet computers, smartphones and Web applications to database replication for remote sites.



Microsoft Partner

Gold Independent Software Vendor (ISV)

COGEP has been a Microsoft Gold Certified Partner since 2007 and has been using .NET technology since 2002.

TOP BUSINESS CHALLENGES YOU CAN ADDRESS WITH GUIDE TI

Guide Ti is a CMMS that can help keep maintenance goals aligned with the overall efforts of your organization. Discover ten business challenges Guide Ti can help you conquer as you strive for efficiency:

1. Reduce Unit Costs
2. Optimize Return on Assets
3. Reduce Capex
4. Optimize Production Capacity
5. Speed up Procurement Processes
6. Prevent Loss of Knowledge
7. Improve Safety
8. Comply with Environmental Regulations
9. Improve Resource Efficiency
10. Access Advanced Data Analytics for Assets Efficiency Reports

We are Experts in Maintenance Management

With more than 30 years of innovation, COGEP is the acknowledged expert in many sectors including manufacturing, industry, agri-food, mining, health and building management.

Agri-food

- Meat-packing plants
- Food and drink
- Cheese products
- Fruits and vegetables
- Milk products
- Processing

Industry and Manufacturing

- Aerospace
- Energy
- Printing
- Construction materials
- Machining

Natural Resources and Heavy Industry

- Smelting works
- Mines
- Pulp and paper
- Petrochemicals
- Sawmills

Public, Municipal and Building Sectors

- Airports
- Governments
- Infrastructure
- Municipalities
- Building management
- Health

Transportation

- Air
- Rail
- Maritime
- Land

SUNTORY
GLOBAL SPIRITS



HITACHI



Saputo

ABB



FedEx



GENERAL DYNAMICS



IAMGOLD



Domtar



What Can **Guide Ti** Do For Organizations?

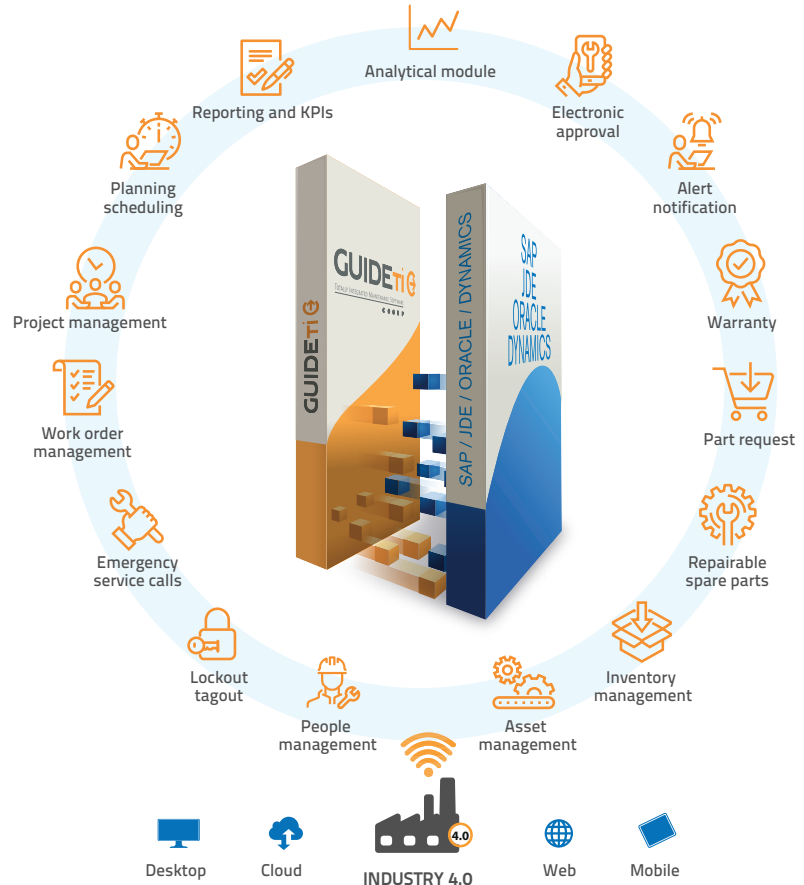
Guide Ti is the most complete and powerful maintenance and procurement management system in Canada. The software enables companies to plan, organize and have control over their activities. These capabilities cover inventories, procurement and maintenance of strategic assets such as production equipment, vehicles, buildings and computer populations.

Tool to control costs and make decisions

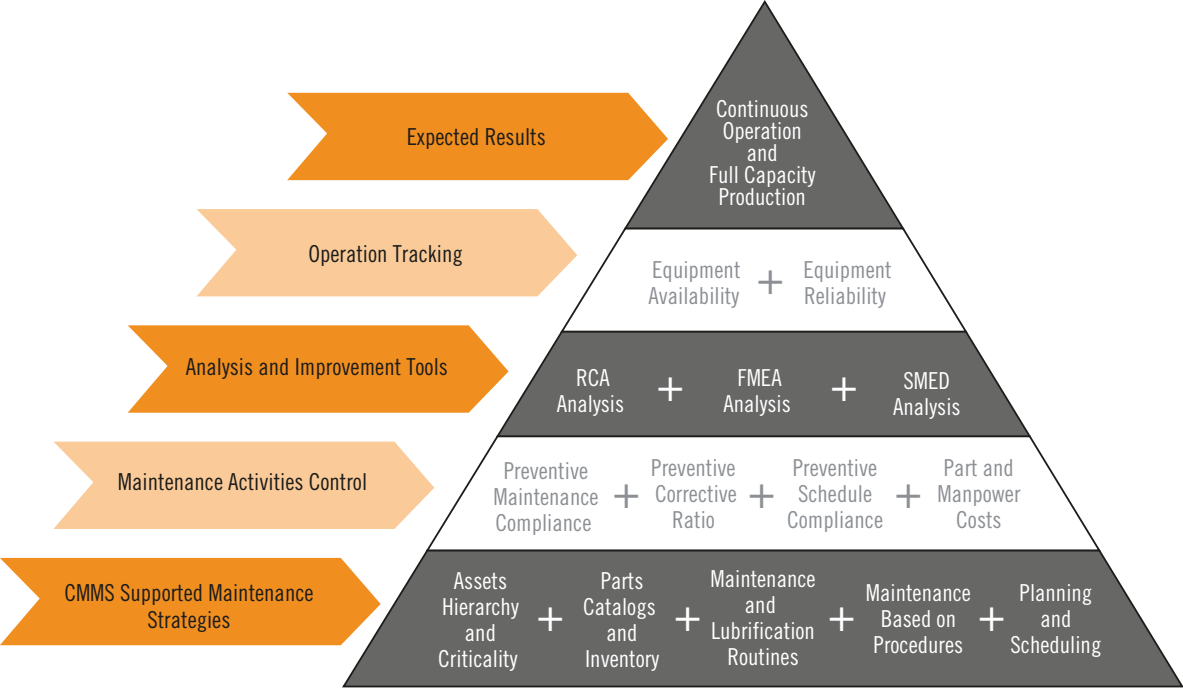
- Examine the key performance indicators (KPI) and operational costs of your assets.
- Intuitive access to real-time
- Customize your reports and modify them at any time using integrated dynamic grids:

- customize
- filter

- regroup
- calculate



Guide Ti supports the best practices that contribute to your success



A Good Planning Tool Helps you Optimize Equipment Reliability

Our CMMS, with its advanced planning and scheduling module, helps you define priorities, set task workflows to execute, and better manage your maintenance task backlog.

With SmartPlanner™, planning your tasks is child's play.

The screenshot displays the SmartPlanner software interface, which is used for maintenance planning and scheduling. It features several key components:

- Advanced planning tool (PLAN):** A sidebar on the left with filters for 'Include sublevels', 'Iron-lead (10)', 'In preparation', 'Ready to schedule', and 'In Progress'. It also shows a 'Scheduling calendar' for 'Maintenance (Day)' with a progress bar for 'Electrician' (100%) and 'Mechanic' (35%).
- Planning list:** A table listing work orders with columns for 'Work order', 'Step', 'Asset', 'WO description', 'Required skill', and 'Remaining estimated'.

Work order	Step	Asset	WO description	Required skill	Remaining estimated
P-2215.1	Execution	ROBO-0002	Robots maintenance 1000h	Mechanic	10.00 R
P-2215.2	Execution	ROBO-0002	Robots maintenance 1000h	Electrician	2.00 R
C-1740.2	Preparation	MOTO-0125	Replace the motor bearings	Electrician	0.50 N
C-1740.3	Execution	MOTO-0125	Replace the motor bearings	Mechanic	2.00 N
C-1740.3	Preparation	MOTO-0125	Replace the motor bearings	Electrician	0.50 N
- Scheduling by resource:** A Gantt chart view showing task assignments for resources like 'MARTIN, Andrew' (Electrician) and 'HARPER, Billy' (Mechanic) across various work orders and time slots.
- Time slots list:** A table listing tasks with columns for 'Seq', 'Work order', 'Asset', 'Required skill', 'Estimated', 'Duration', and 'Assignment'.

Seq	Work order	Asset	Required skill	Estimated	Duration	Assignment
0	P-2210.1	ROBO-0001	Mechanic	10.00	5.00	SMITH, James
1	P-2211	HYPU-0075	Mechanic	0.50	0.50	HARPER, Billy
2	P-2212	HYPU-0082	Mechanic	0.50	0.50	HARPER, Billy
3	P-2210.1	ROBO-0001	Mechanic	10.00	5.00	PORTER, William
4	C-1734	CONV-0001	Mechanic	1.00	2.00	HARPER, Billy
5	C-1735	CONV-0002	Mechanic	1.00	2.00	HARPER, Billy

PLANNING AND SCHEDULING TOOL THAT FACILITATES RAPID INTERVENTION

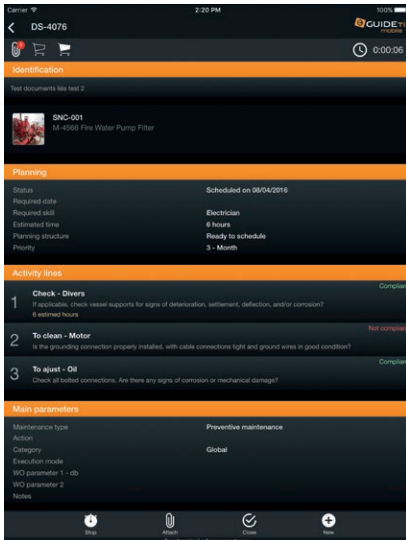
- Reduce processing delays by 50% by using e-business processes: approvals, delegating, redirecting, monetary level, e-mail notifications.
- Even provide approvals using your smartphone.
- Using our SmartPlanner™ module:
 - identify multiple time slots
 - assign tasks and resources with no limit
 - access all database fields with a simple click of the mouse



The Best CMMS Mobile App for iOS & Android.

*Fulfill your work orders more efficiently
and stay connected wherever you go!*

Always innovating, **COGEP** now offers its customers a mobile version of **Guide Ti**, which will enable users to have more autonomy and work more efficiently whether they're on line or not. This application reinvents the way in which information is presented to users while ensuring that they can use it on site with confidence. Guide Ti Mobile is as simple to use and as intuitive as the PC-based version, yet offers the advantages of a touch screen and mobility.



Maintenance employees work more efficiently by accessing their work orders and equipment lists wherever they're working even where there is no Internet connection. Technicians may take videos and photos of assets and issues.

Mobile solution 100% compatible with your network infrastructure

Guide Ti Mobile operates with the Windows 8 Surface Tablet platforms thereby facilitating the connection with the Microsoft operating system and network in place in your organization.

Access your data whether you are on line or not

Guide Ti Mobile enables you to access your data and even to create new work orders without an Internet connection. The data entered is stored in the tablet and can be transferred to your system later once an Internet connection is established.

Improve communication speed and efficiency

Synchronization allows Guide Ti Mobile to receive and transmit in real time new work orders and new information gathered, without requiring maintenance employees to return to their office.

3 Compelling Reasons To Choose Guide Ti

COGEP offers powerful, easy-to-use solutions for SME and large organizations. Its **Guide Ti** software solution enables you to reduce your maintenance costs, and improve productivity and efficiency in your organization.

20% INCREASE in WORKER PRODUCTIVITY

1

Guide Ti's planning and advanced search tools result in a 20% increase in worker productivity by providing rapid access to your data.

"For the past 17 years, Guide Ti has contributed to the efficiency improvements in our maintenance department. Believe me—it works!"

- David Aubin, Maintenance Director, BRP

50% REDUCTION in PLANNING TIME

2

Look up worker and part availability as well as task assignments, all in real time and without limits.

"Since we've been using Guide Ti, we've reduced our procurement order errors by more than 95% and we've halved the time required to prepare those orders."

- Viola Stewart, Maintenance Planning Coordinator, Breakwater Resources

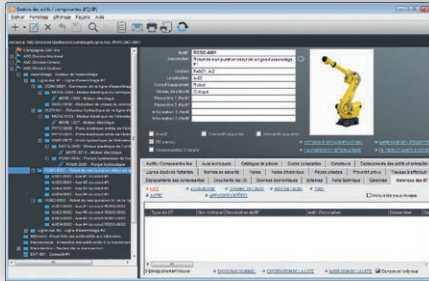
50% REDUCTION in PROCUREMENT LEAD TIME

3

Keep informed by electronic approvals with Web application or your smartphone and redirect information and notifications immediately.

"I'd recommend Guide Ti for any company that is seeking efficient monitoring of its equipment and purchases."

- Marie Gagnon, Buyer, Tarkett



INFORMATION MANAGEMENT TOOL

- Use the powerful FILTER tool when performing searches or producing reports
- With intuitive functionality, increase the autonomy of your employees
- Maintain a history of your equipment and adopt a proactive approach to the potential loss of technical knowledge as older workers retire
- Manage your inventories, tools, repairable parts, work orders, simply using your PDA and our integrated bar code module



MANAGEMENT TOOL FOR PROCUREMENT AND INVENTORIES

- Reduce procurement delays
- Easily monitor your part orders
- Optimize inventories with the IMAFS analysis module
- Reduce inventory shortages
- Optimize service levels
- Reduce transportation costs
- Improve order forecasting



MANAGEMENT TOOL FOR SECURITY AND QUALITY STANDARDS MANAGEMENT

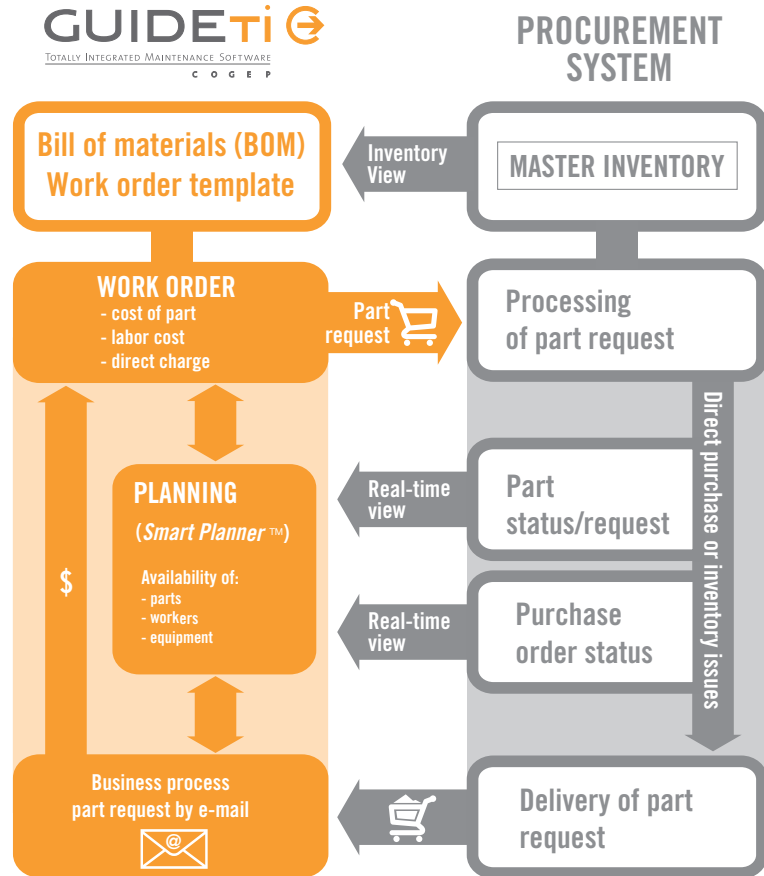
- Ensure that there is a complete historical record of all changes made in the database
- Ensure that there is a complete historical record of your equipment
- With electronic signatures, provide proof that the person who performed an action was authorized to do so
- Provide support for Sarbanes-Oxley (SOX) audits and proof of compliance with other standards and regulations (ISO, HACCP, etc.)

Implementation of Guide Ti is fast

Guide Ti is a complete solution. It can be a standalone solution or it can complement your enterprise resource planning (ERP) system.

Guide Ti integrates easily into all ERP financial systems such as Microsoft Dynamics (BC, D365, GP, NAV and AX) SAP Business One, JD Edwards, Oracle, Baan, SAGE/ ACCPAC and Epicor Vantage among others.

“By far the fastest implementation I’ve ever experienced.”
- Christian Cloutier, Plant Maintenance Manager, SEMAFO



According to an independent survey of COGEP clients:

- 93% of respondents described **Guide Ti** as reliable, complete and fast
- 92% of people surveyed affirmed that **Guide Ti** was important or very important in the performance of their daily tasks
- 99% of respondents stated they were satisfied with **Guide Ti** and would recommend it
- 71% of people surveyed considered that **Guide Ti** had greatly improved the quality of their services
- 99% of respondents indicated they were satisfied with COGEP's customer service:
 - for its ability to provide knowledgeable answers to questions
 - for the technical knowledge of its employees
 - for its call response time

"COGEP provides a level of service that is superior to most and its team is attentive to our needs with regard to developing new features."

- *Christine Sigmen, Eng., Project Manager, Marmen*

"The COGEP team is always there for us. They're always patient and immediately take charge of all concerns whenever a difficulty arises."

- *Raymond Levasseur, PM Manager, Béton Provincial Ltd.*

"We receive excellent customer service; the personnel are always courteous and offer the possibility of requesting modifications when necessary. The team is particularly attentive to our needs and invests a lot of energy in continually improving the product."

- *Karl Ouellet, Maintenance Supervisor, Norampac, Drummondville*





“COGEP is an excellent partner!”

- Céline Routhier, Administration and Financial Officer, CGER

CO | GEP

Contact us by e-mail : sales@cogep.com
or call and ask for a demo. Let us put our expertise to work
for you to improve your organization's performance.

825 Lebourgneuf Boulevard, Suite 400, Quebec City, Qc Canada G2J 0B9 • www.cogep.com
Toll-free within Canada and the U.S. : 1-877-424-2503 • Elsewhere: +1-418-626-2503